

*Mapping agency following the  
1991 Docklands' regeneration:  
Can performance alter agency in  
Canary Wharf?*



Natalia Biglou, Akrivi-Ioanna Chiotini, Claire French, Isabel Jakob









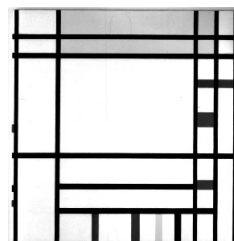
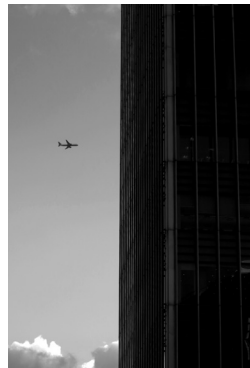
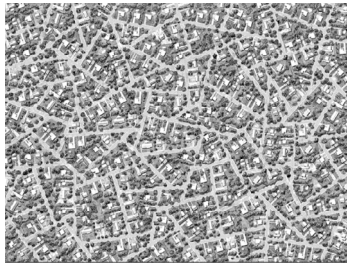
*Mapping agency following the  
1991 Docklands' regeneration:  
Can performance alter agency in  
Canary Wharf?*

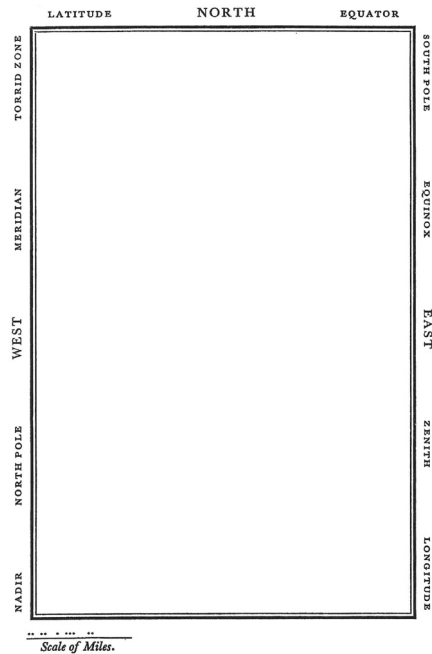
“Most important of all, they promised to transform places by increasing not only their own property values but those in the surrounding areas, bringing in so much wealth that it somehow flows out to the gates of the gated properties and ‘tickles down’ to the surrounding poor. This was the idea of ‘regeneration’, a word which came into use during the 1980s, and means ‘rebirth’ in Latin. Rather than the more prosaic ‘redevelopment’, it conjures up the image of the phoenix of Canary Wharf and the new economy rising from the ashes of Docklands and Britain’s industrial past..”

*Mapping agency following the  
1991 Docklands' regeneration:  
Can performance alter agency in  
Canary Wharf?*



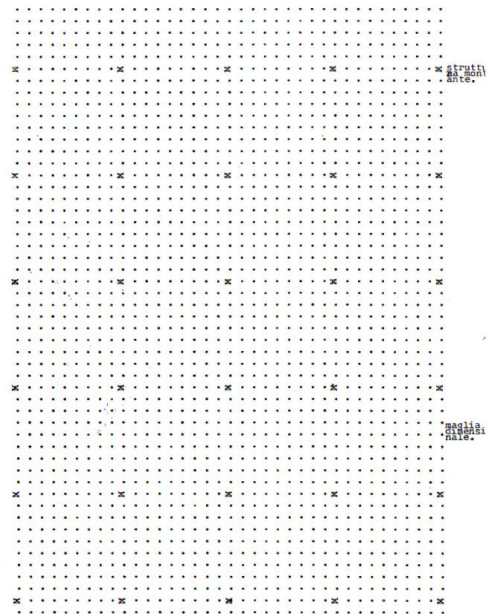
# *Aerial View*



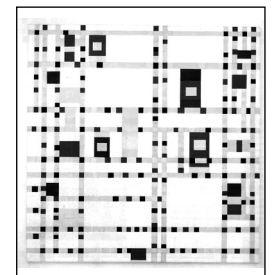
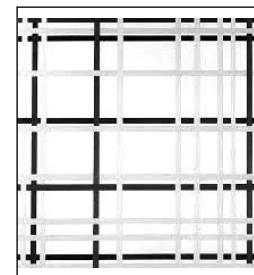
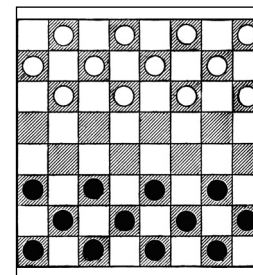
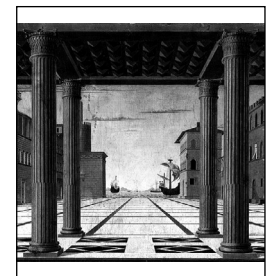
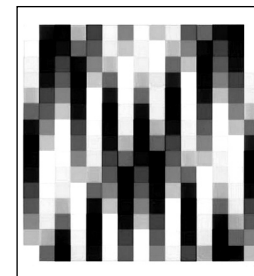
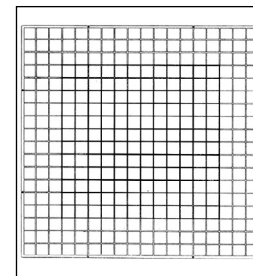
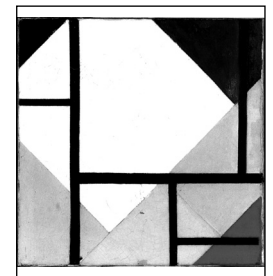
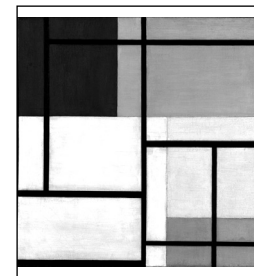
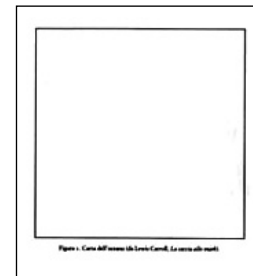


ARCHIZOOM ASSOCIATI  
DIAGRAMMA ABITATIVO  
OMOGENEO

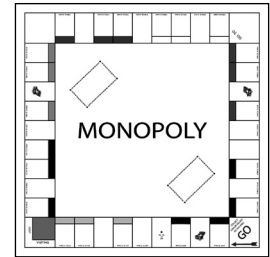
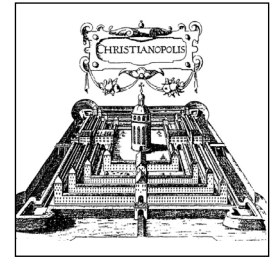
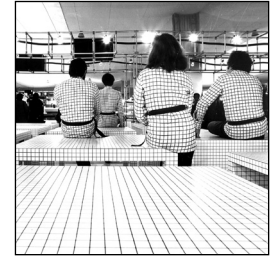
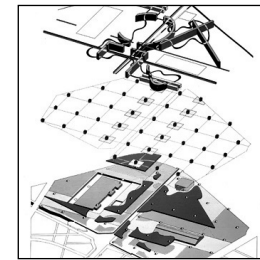
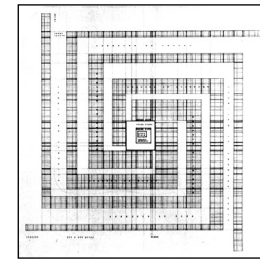
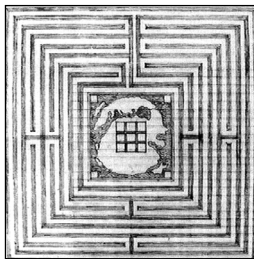
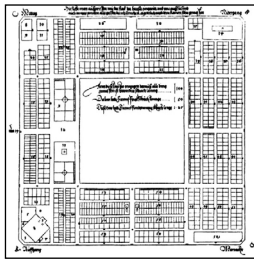
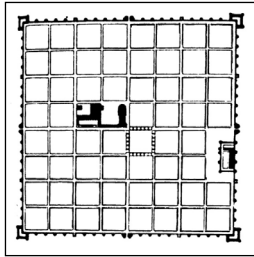
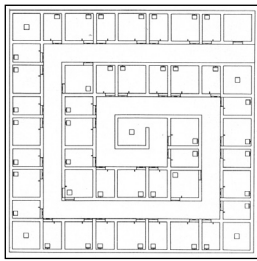
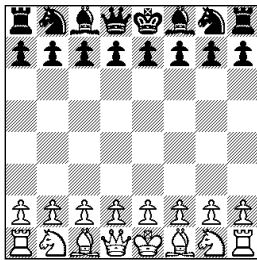
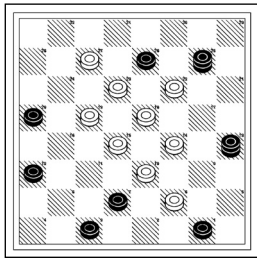
IPOTESI DI LINGUAGGIO  
ARCHITETTONICO NON FIGURATIVO



# Grid



# *Chess & Ideal Cities*

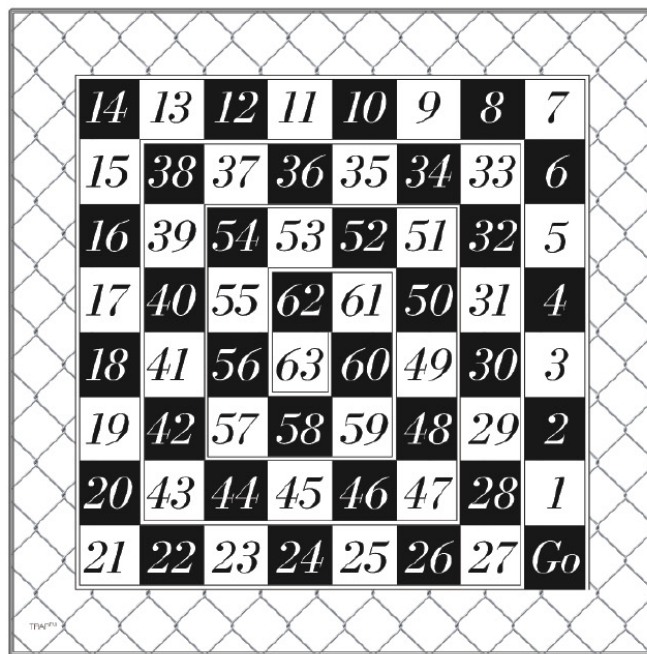




# Maps

## TRAP™

1 ♀  
2 ♀  
3 E14 4ED  
4 E14 4AL  
5 E14 4AL  
6 ♀  
7 E14 8BE  
8 E14 4RS  
9 E14 8RS  
10 ♀  
11 E14 8GU  
12 E14 8SH  
13 E14 8YT  
14 E14 8SB  
15 E16 3PX  
16 E14 8HJ  
17 E14 8GL  
18 E14 8HS  
19 E14 4DH  
20 E14 4BB  
21 E14 4QJ  
22 E14 4QJ  
23 E14 4HD  
24 E14 4HD  
25 E14 4HE  
26 E14 4JB  
27 E14 4JB  
28 ♀  
29 E14 4JP  
30 E14 8NR  
31 E14 8NR  
32 E14 8DS



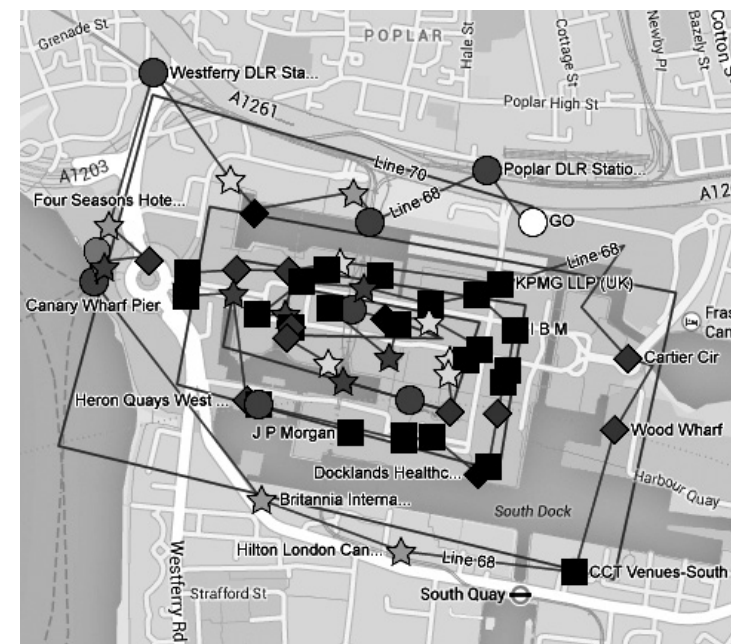
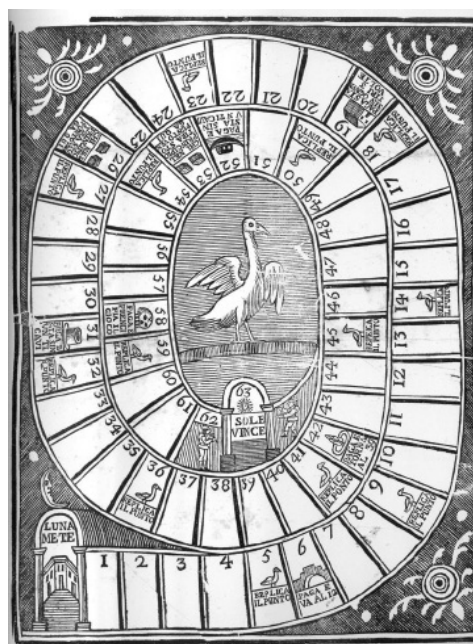
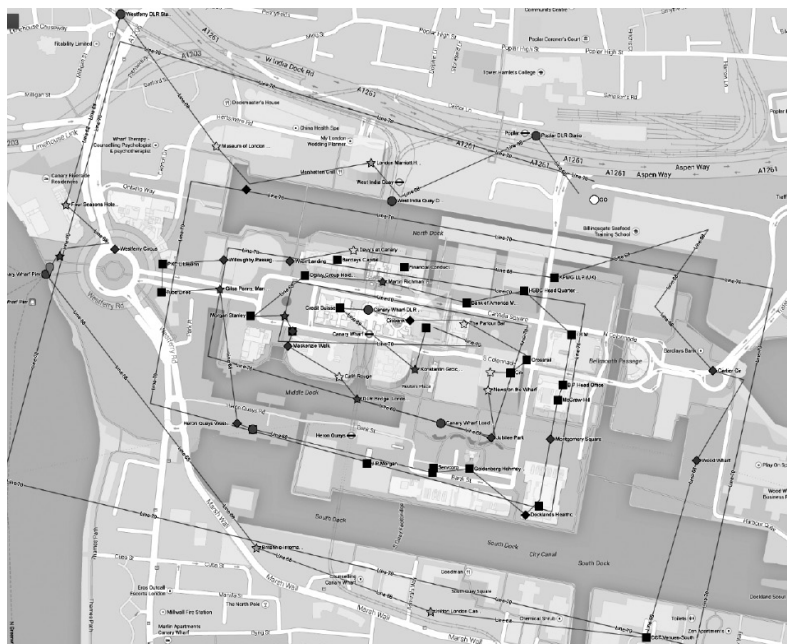
# Game

<b>14 Wood Wharf</b> SIT DOWN AND START SINGING.	<b>13 CCT Venues South Quay</b> ENQUIRE ABOUT HAVING YOUR BIRTHDAY THERE.	<b>12 Hilton</b> ASK WHY THE HILTON IS BETTER THAN THE BRITANNIA.	<b>11 Britannia International</b> ASK WHY THE BRITANNIA IS BETTER THAN THE HILTON.	<b>10 Canary Wharf Pier</b> MOVE TO CANARY WHARF TUBE ST.	<b>9 Windward</b> TRY CLIMBING THE SCULPTURE.	<b>8 Four Seasons Hotel</b> ASK HOW MUCH THE LUXURY SUITE COSTS PER NIGHT.	<b>7 Westferry Circus</b> PLAY AN INSTRUMENT.
<b>15 London City Airport</b> MOVE TO WESTFERRY 6.	<b>38 McGrath's Hill</b> HAVE A STAMING CONTEST THROUGH THE GLASS.	<b>37 Montgomery Square</b> STRETCH OUT AND SUNBATHE.	<b>36 Total Gas &amp; Power</b> USE THE GLASS TO FIX YOURSELF UP.	<b>35 Mastercard</b> TELL SECURITY YOU WOULD LIKE TO WAIT INSIDE.	<b>34 Docklands Healthcare</b> HAS SOMEONE WAITING.	<b>33 Goldenberg Heymer</b> OFFER SOMEONE A PALM READING.	<b>6 Westferry Station</b> MOVE TO LONDON CITY AIRPORT ST.
<b>16 Cartier Circle</b> DO A YOGA SEQUENCE ON THE ROUNDABOUT.	<b>39 BP Head Offices</b> GIVE SOMEONE A MOTIVATIONAL SPEECH.	<b>54 Nets on the Wharf</b> ASK THE SELLER WHICH PUBLICATION IS MOST POPULAR.	<b>53 Jubilee Park</b> START A FLASH MOB.	<b>52 Canary Wharf</b> MOVE TO CANARY WHARF PIER 36.	<b>51 DLR Bridge</b> ASK SOMEONE TO DESCRIBE THE SPACE IN 2 WORDS.	<b>32 Sladden Arms</b> START A LAW CASE AGAINST CANARY WHARF GROUP PLC.	<b>5 Docklands Museum</b> ASK THE CURATOR WHO PETER WADE IS.
<b>17 KPMG LLP</b> OPEN TINDER AND GET SOMEONE TO MEET YOU HERE.	<b>40 I B M</b> CHALLENGE SOMEONE TO A THUMB WAR.	<b>55 Shopping Mall</b> ENTER THE MALL, WEARING A CONES FLUCTION HAT.	<b>62 Thomson Reuters Plaza</b> FIND A WAY OF STOPPING THE CLOCKS.	<b>61 Credit Suisse</b> SKIP 2 TURNS AND WAIT HERE.	<b>50 Café Rouge</b> ORDER YOUR MEAL IN FRENCH.	<b>31 Shell International</b> GIVE A WINDOW THE MIDDLE FINGER.	<b>4 St Peter's Barge</b> ATTEND A SERMON.
<b>18 F&amp;A</b> ASK SOMEONE FOR A POUND.	<b>41 HSBC Head Quarters</b> STAND OUTSIDE OF THE BUILDING AND SCREAM.	<b>56 Citi</b> THROW PAPER PLANES AT THE ENTRANCE.	<b>63 Canary Wharf</b> GO TO THE ROOF-TOP AND JUMP IF NOT, START OVER.	<b>60 Canary Wharf</b> TAKE THE DLR AND MOVE TO WEST FROM QUAY PIER 2.	<b>49 Mackenzie Walk</b> CLIMB DOWN TO STAND ON THE MOORED BARGE.	<b>30 Servicecorp</b> PRETEND TO GET A QUOTE AND MOVE TO SHELL ST.	<b>3 Marriott Apartments</b> LEAVE A NOTE TO A RESIDENT ON THE LIFT.
<b>19 Davy's</b> START CRYING AND HAVE SOMEONE BUY YOU A COCKTAIL.	<b>42 Bank of America</b> HIGH-FIVE SOMEONE.	<b>57 Crossrail</b> ASK TO BE ON THE GUESTLIST FOR THE STATION'S OPENING.	<b>58 The Parlour Bar</b> MOVE TO CITIBANK ST.	<b>59 Citibank</b> START A DEBATE WITH SOMEONE ABOUT THE CITY.	<b>48 The Economist</b> BUY SOMEONE A COFFEE.	<b>29 JP Morgan</b> SKIP 2 TURNS AND WAIT HERE.	<b>2 West India Quay</b> TAKE THE DLR AND MOVE TO CANARY WHARF ST.
<b>20 Barejays</b> ASK FOR A GLASS OF WATER.	<b>43 North Colonnade</b> HAVE A SILENT DISCO IN FRONT OF THE AIRPORT.	<b>44 Ogilvy Group Holdings</b> SUBMIT YOUR CV FOR A JOB.	<b>45 Morgan Stanley</b> BEE IF YOU CAN GET TO THE TOP FLOOR.	<b>46 Couple on Seat</b> POSE NEXT TO THE STATUES FOR THREE WHOLE MINUTES.	<b>47 Cabot Square</b> CHAT SOMEONE UP.	<b>28 Heron Quays</b> TAKE THE DLR AND MOVE TO POPULAR QUAY ST.	<b>1 Poplar</b> TAKE THE DLR AND MOVE TO HERON QUAY DLR ST.
<b>21 Wren Landing</b> GIVE SOMEONE A FLOWER FOR THEIR PARTNER.	<b>22 Willsborough Passage</b> SIT CROSS-LEGGED AND MEDITATE.	<b>23 PKF Littlejohn</b> SPILL YOUR DRINK ON SOMEONE IN A RUSH.	<b>24 Tube Lines</b> ASK FOR A FRAMED AND SIGNED TUBE MAP.	<b>25 Man with arms open</b> GIVE THE STATUE A HUG.	<b>26 Heron Quays West Park</b> CLIMB THE FENCE AND SHOUT 'I DID IT'.	<b>27 UK Youth</b> FIND OUT HOW TO SEE THE PANDA AT EDSBURGH ZOO.	

E14 8NS 33  
E14 8EE 34  
E14 8NP 35  
E14 8BF 36  
E14 8HQ 37  
E14 8LH 38  
E14 8NJ 39  
E14 8SP 40  
E14 8AH 41  
E14 8AO 42  
E14 8HD 43  
E14 8QB 44  
E14 8QA 45  
E14 8QA 46  
E14 8QA 47  
E14 8QW 48  
E14 8AP 49  
E14 8PH 50  
E14 8EH 51  
E14 8NY 53  
E14 8QT 54  
E14 8S 55  
E14 8LB 56  
E14 8LD 57  
E14 8FV 58  
E14 8LS 59  
E14 8OR 60  
E14 8EP 62  
E14 8AB 63

Go.

TRAP™





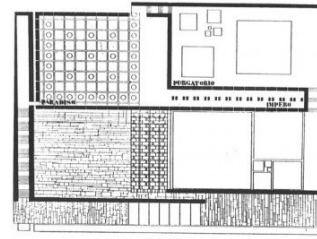
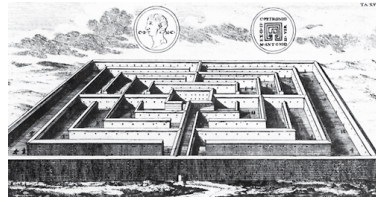
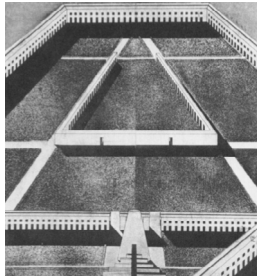
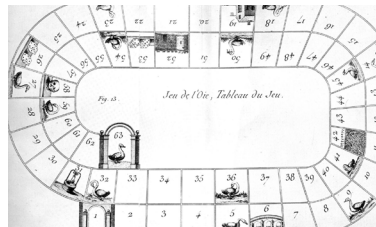
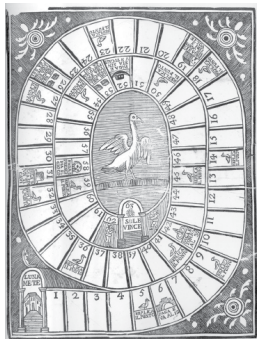
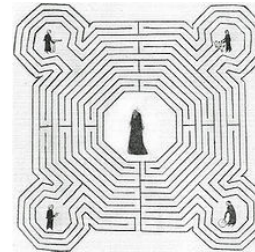
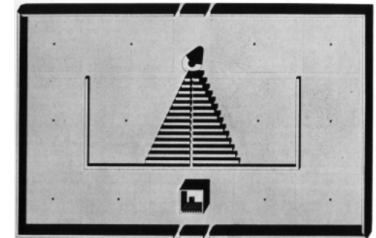
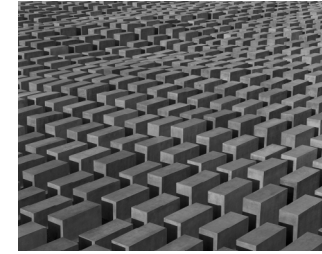
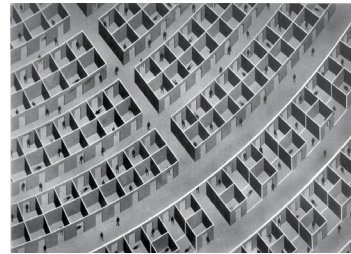
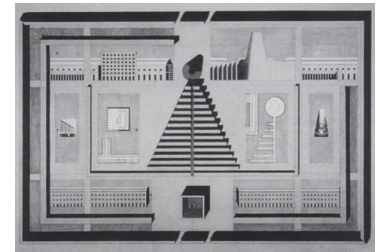
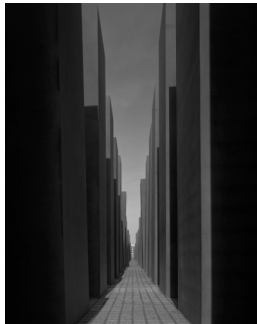
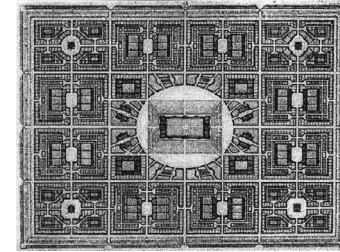
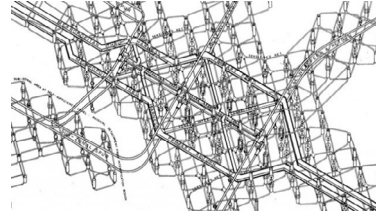
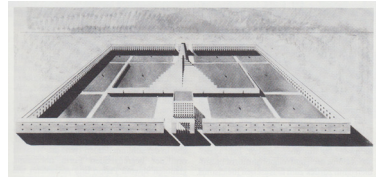
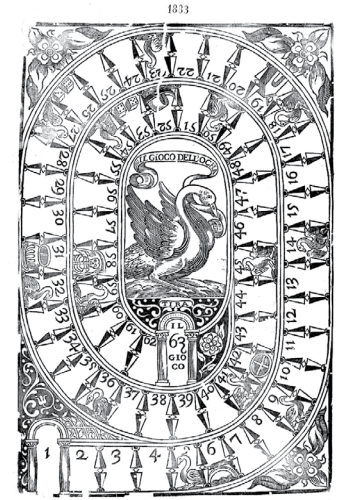
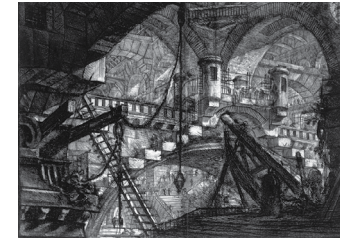


FIG. 31. Plan at some top level.



*Labyrinth*







Most pleasant + relax place in London



Concrete Jungle



Modern - Industrial



Heart of London :) <3



Lost opportunities



Awesome - Fantastic



Canary Wharf is one of the most beautiful place in London



Steril



Modern !



## Filming & Photography at Canary Wharf

To apply to film and photograph on the Canary Wharf Estate you need to do the following:

1. Read all of the content on this page, including the terms and conditions.
2. Fill in the [Company Registration Form](#) and the [Film and Photography Application Form](#) and email them to [pressoffice@canarywharf.com](mailto:pressoffice@canarywharf.com)
3. If required, send a risk assessment, method statement and evidence of public liability insurance to [pressoffice@canarywharf.com](mailto:pressoffice@canarywharf.com). See the FAQs section below for guidance.
4. If permission is granted you will be emailed a permit. Print this out and bring it with you when you film or photograph at Canary Wharf. Please show it to security personnel if requested.
5. For multiple requests, we may set you up on the e-permits system so you can apply online. If so you will be emailed log-in details and asked to follow the instructions.



If you have any additional questions, contact:

Press Office  
Group Communications Manager  
Canary Wharf Group plc  
Phone: +44 (0)20 7418 2100  
Email: [PressOffice@canarywharf.com](mailto:PressOffice@canarywharf.com)

### Frequently Asked Questions

#### Do I require permission?

You will require a permit for filming or photography on the Canary Wharf Estate if:

- The filming and photography is for professional use, sale, commercial gain or media reproduction; and/or
- you will potentially cause disruption or harm to people or property on the Canary Wharf Estate; and/or
- you are filming/photographing indoors in any of the common areas in the buildings (eg lobbies or shopping malls); and/or
- you are filming building entrances, shop fronts or any of the security arrangements in place.

You do not necessarily require a permit if:

- You are taking the images for solely amateur purposes and do not intend to reproduce them for media, sale or commercial benefit (for example you are a tourist, hobbyist or student); and
- your equipment is minimal (for example, nothing more than a camera and stationary tripod); and
- you are not causing any disruption, harm or potential harm to people, property or yourself; and
- you are outdoors; and
- you are not filming or photographing any building entrances or security arrangements.

Students are advised to carry with them a student ID and letter of introduction from their educational institution.

#### Why are permits required for filming and photography?

Canary Wharf is a privately owned Estate owned by Canary Wharf Group plc.

As owners of the Estate, we have a duty to ensure that any activity that takes place there including filming and photography is safe, carries the correct insurance, minimises disruption and does not compromise security.

*Mapping agency following the 1991 Docklands' regeneration: Can performance alter agency in Canary Wharf?*







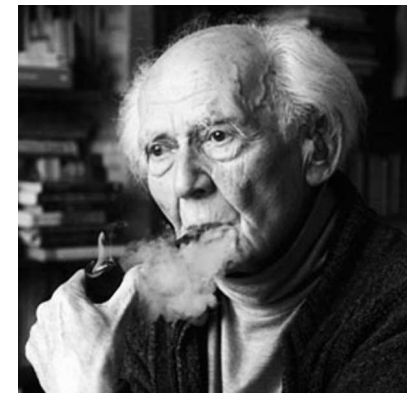
*Trap*



*Mapping agency following the 1991 Docklands' regeneration: Can performance alter agency in Canary Wharf?*

“We are witnessing the revenge of nomadism over the principle of territoriality and settlement. In the fluid stage of modernity, the settled majority is ruled by the nomadic and exterritorial elite. Keeping the roads free for nomadic traffic and phasing out the remaining check-points has now become the meta-purpose of politics.”

Z. Bauman, *Work, Consumerism and The New Poor*, 1998





*Liquid Modernity*



“Docklands Development Corporation was established in 1981 to restore and renew the wasteland left by the closure of the London Docks [...] trade had been lost and the manufacturing industries moved out and closed down to make room for what we now know as Canary Wharf.”

P. Ackroyd, *London: A Biography*, 2000

“Nowhere is the demand greater for free WiFi than in Canary Wharf where big business deals are being struck every day, often away from the office and on the move.”

Gavin Franks, Managing Director of O2 Wifi

••••• Vodafone UK 18:44

< Back

More

17 Mar 2014 4:44 pm

Hi there

Hellooo

Are you tinding at work?!

Yes I am

In front of my client

I'm really naughty

You?

very naughty! Is it that boring ?

••••• Vodafone UK 18:44

< Back

More

I'm a tax consultant for jpmorgan. So yes.

Oh dear

Didn't someone jump out of one of the windows at jp Morgan recently?

Yes he was a trader in technology. One of his startup firms that he was selling stocks for went bust

Which meant he was most definitely going to be made redundant

And never get a job as a trader again. Sad times

••••• Vodafone UK 18:44

< Back

More

Anyway so what do you do?

That's awful! As if his job was that important to him?

I'm a masters student :)

And has the client clocked yet?

Hmm slightly more complicated than that. As a trader you get used to the lifestyle and I guess when you have to downgrade from that it sometimes is too much.

# Tinder



< Back



More

It also helps that my team has done well over the past few years

I like working with people and ideas, and I think my existing role provides for a lot of that. There's very little admin / routine work

I see! Yes I hear it can get pretty stressful if you don't do well!

Eg jp Morgan fella

Yes, and I've been through that as well. You have to be resilient and accept that things aren't always within your control

Just like life really!



How do you cope accepting things aren't in your control?

I think you learn to be stoic. Acknowledge that you've done all you can and the rest is down to luck / fate / whatever you want to call it

“We are witnessing the revenge of nomadism over the principle of territoriality and settlement. In the fluid stage of modernity, the settled majority is ruled by the nomadic and extraterritorial elite. Keeping the roads free for nomadic traffic and phasing out the remaining check-points has now become the meta-purpose of politics.”

Z. Bauman, *Liquid Modernity*, 2000



< Back



More



It also helps that my team has done well over the past few years



I like working with people and ideas, and I think my existing role provides for a lot of that. There's very little admin / routine work

I see! Yes I hear it can get pretty stressful if you don't do well!

Eg jp Morgan fella



Yes, and I've been through that as well. You have to be resilient and accept that things aren't always within your control



Just like life really!



How do you cope accepting things aren't in your control?



I think you learn to be stoic. Acknowledge that you've done all you can and the rest is down to luck / fate / whatever you want to call it

## JP Morgan employee who fell to his death named as Gabriel Magee

Magee, a vice-president in IT, landed on ninth floor of 33-floor building in Canary Wharf and was seen by office workers

Haroon Siddique

The Guardian, Tuesday 28 January 2014 17.31 GMT



The body of JP Morgan employee Gabriel Magee, 39, could be seen by office workers nearby. Photograph: Amer Ghazzal/Barcroft Media

An employee of JP Morgan investment bank who fell to his death from the firm's European headquarters during rush hour in London has been named as 39-year-old Gabriel Magee.

## JP Morgan didn't even have the decency to call us after our son jumped 500ft to his death from London HQ, say his American parents

- **Gabriel Magee, a 39-year-old JP Morgan bank executive, died yesterday morning**
- **The American threw himself off the top of the bank's London headquarters**
- **His parents Bill and Nell Magee say they will travel from New Mexico to Britain to demand answers and collect their son's belongings**
- **On Sunday, former Deutsche Bank senior manager, William 'Bill' Broeksmit, 58, was found hanging in his South Kensington home**
- **Both deaths have been ruled non-suspicious by the Metropolitan Police**
- **Magee had lived in London for seven years after transferring from the United States with JP Morgan**
- **Broeksmit had been in London many years but still owned an apartment in an exclusive Central Park building in New York**
- **Both were highly regarded by their bosses and colleagues**

## JP Morgan IT worker falls 500ft to death from Canary Wharf headquarters



Fall: the man was pronounced dead at the scene (Picture: Jeremy Selwyn)

(Reuters) - A JP Morgan tech executive fell to his death from the U.S. bank's 33-storey tower in London's Canary Wharf financial district on Tuesday in what British police said was a "non-suspicious" incident.

Police were called to the glass skyscraper at 8:02 GMT, where a 39-year-old man was pronounced dead at the scene after hitting a lower 9th-floor roof. Witnesses said the body remained on the roof for several hours.

London police said no arrests had been made and the incident was being treated as non-suspicious at this early stage.

A JP Morgan spokeswoman said: "We are deeply saddened to have lost a member of the JP Morgan family at 25 Bank Street today. Our thoughts and sympathy are with his family and his friends."

Local workers spoke of their shock at the scene. Emily Brimson who works nearby, said yesterday morning: "The police came and moved the body a little, took measurements, etc, but then they all left. Now the body is lying there covered by a sheet. One policeman is manning the door."

The 33-floor building has been the European, Middle East and Africa headquarters of JP Morgan since July 2012. It was previously occupied by Lehman Brothers and Enron before that.

JP Morgan employees were informed of the tragedy in an internal email.

## Tragedy at Canary Wharf

1 of 5



ES

Evening Standard @standardnews · Jan 29

JP Morgan plunge: family vow to 'get to the truth' after man dies in Canary Wharf fall [bit.ly/1bxPUd0](http://bit.ly/1bxPUd0)

Expand

Reply Retweet Favorite More

### ES Evening Standard

#### JP Morgan death: IT exec's family pledge to find 'the truth' after...

The devastated family of a JP Morgan executive who plunged to his death from the roof of the bank's European headquarters in Canary Wharf today said they were determined to "get to the truth" about...



Khaled Z @der\_bluethund · Jan 28

Hmm, ex-Deutsche Bank executive found hanged at home, JP Morgan worker jumped off tower at Canary Wharf today... something's awry

Expand

Reply Retweet Favorite More







Emma Warden, Community and Sports Coordinator, Canary Wharf Group plc

**RE: Canary Wharf Project**

Emma Warden [Emma.Warden@CanaryWharf.com]

**Sent:** 18 March 2014 11:02

**To:** Claire French (Stu)

Hi Claire,

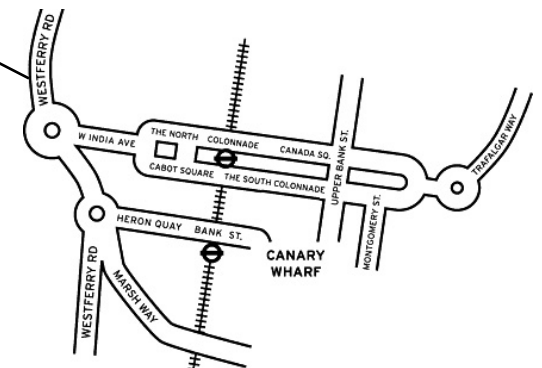
Thanks for letting me know. I'm not sure how comfortable I feel being recorded, I didn't realise this would be the case.

I am happy to have a chat and then prepare some answers to questions that you would like which I can send by email? Would this work for your research?

Emma

Canary Wharf Group plc  
Registered Office: One Canada Square Canary Wharf  
London E14 5AB  
Registered in England and Wales No. 2067510

# *Tower Hamlets*



“We make at least one sharp turn: stop harassing the poor through welfare-to-work programmes; give them instead a basic income and set up spaces for the development of people’s natural instinct for craftsmanship.”

Z. Bauman, *Work, Consumerism and The New Poor*, 1998





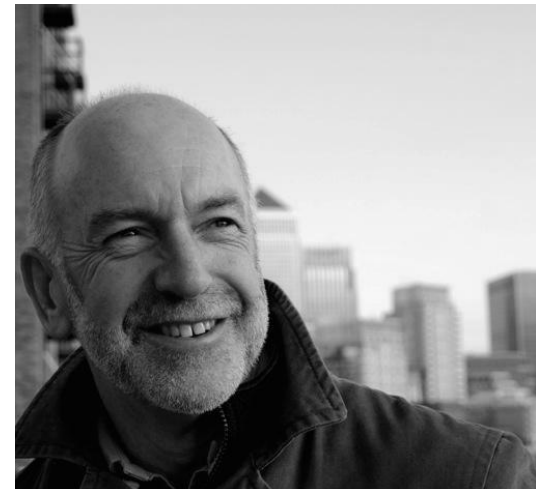
*Tai, jobseeker*

“A lot has changed here.”



“Before the living wage campaign we ran a big skills match project and many of our member groups, churches and East London mosque and others opened their doors as training centres to train people who wanted to be paid for the many opportunities in East London at the time for construction work. That has often been the problem that construction work in East London is booming and has boomed for 20 years. *But the skilled work is drawn from across the world and there is nothing wrong with that but it is much easier and much better for the environment if people are employed locally and if they have the skills, rather than sitting home.* So we put some energy into training people up and getting them into the right jobs so they can be first in the queue.”

Neil Jameson, Executive Director, Citizens UK





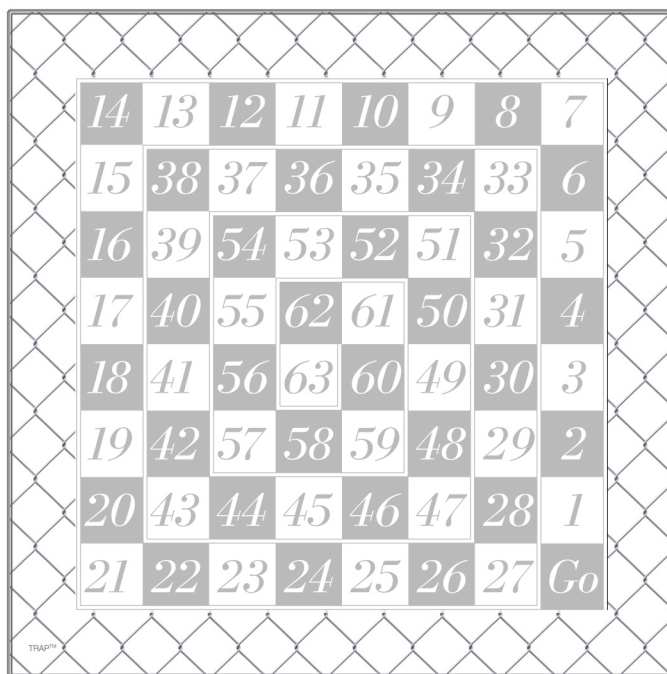


Carl Kemp, Access Manager

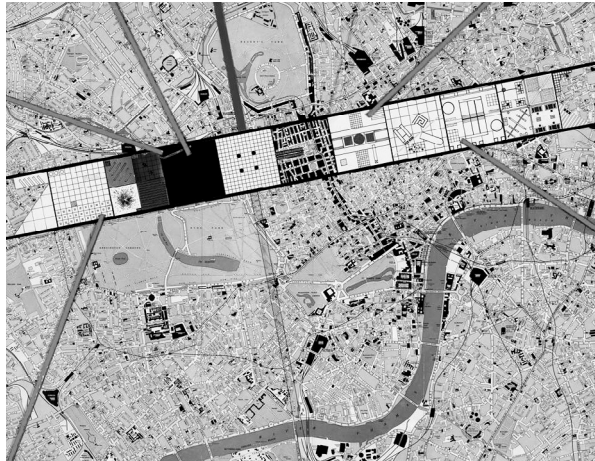


Carl Kemp, Access Manager

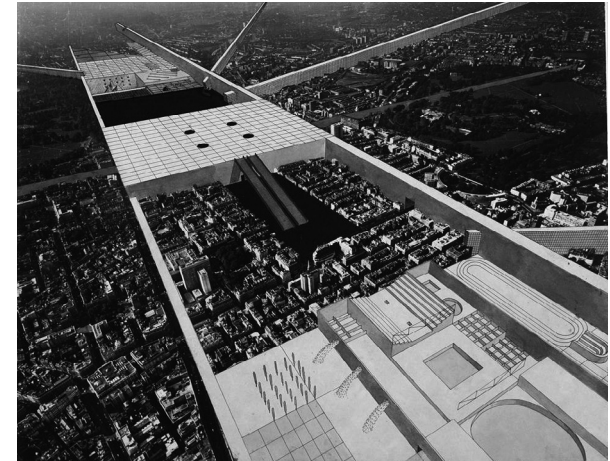
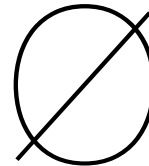
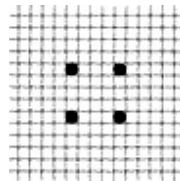
“Tower Hamlets [...] remains a place of extremes. Notable by its relative absence, by comparison with the London average, is what might be called the middle or intermediate range of skills, employment prospects and jobs. This ‘*missing middle*’ effect is linked to the particular pattern of housing tenure and the pricing of accommodation, and its interface with household incomes and wealth. The very wealthy and the very poor predominate in Tower Hamlets, with little bridging them economically or socially. At its worst, this represents a kind of bipolar world in which two distinct groups are separated as much by psychological or cultural space as by physical or spatial barriers.”



“Once, a city was divided in two parts. One part became the Good Half, the other part the Bad Half. The inhabitants of the Bad Half began to flock to the good part of the divided city, rapidly swelling into an urban exodus. The people of London could choose: those who wanted to be admitted to this zone of hyperdensity became ‘*The Voluntary Prisoners of Architecture.*’”



# *Exodus*



“Originally no more than some pathetic strings of barbed wire abruptly dropped on the imaginary line of the border, its psychological and symbolic effects were infinitely more powerful than its physical appearance. The Good Half, now glimpsed only over the forbidding obstacle from an agonizing distance, became even more irresistible. *Those trapped, left behind in the gloomy Bad Half, became obsessed with vain plans for escape.* Hopelessness reigned supreme on the wrong side of the Wall. As so often before in this history of mankind, architecture was the guilty instrument of despair. [...] Suddenly, a strip of intense metropolitan desirability runs through the center of London. [...] Two walls enclose and protect this zone to retain its integrity and to prevent any contamination [...] *Apart from these three main buildings, the only tangible exhibits in the Square are small buildings that resemble pawns on the grid of an ancient game.* They are dropped like meteorites of unknown metaphysical meaning, waiting to be moved to the next intersection of the game; with each move they are further deciphered.



14	13	12	11	10	9	8	7
15	38	37	36	35	34	33	6
16	39	54	53	52	51	32	5
17	40	55	62	61	50	31	4
18	41	56	63	60	49	30	3
19	42	57	58	59	48	29	2
20	43	44	45	46	47	28	1
21	22	23	24	25	26	27	Go